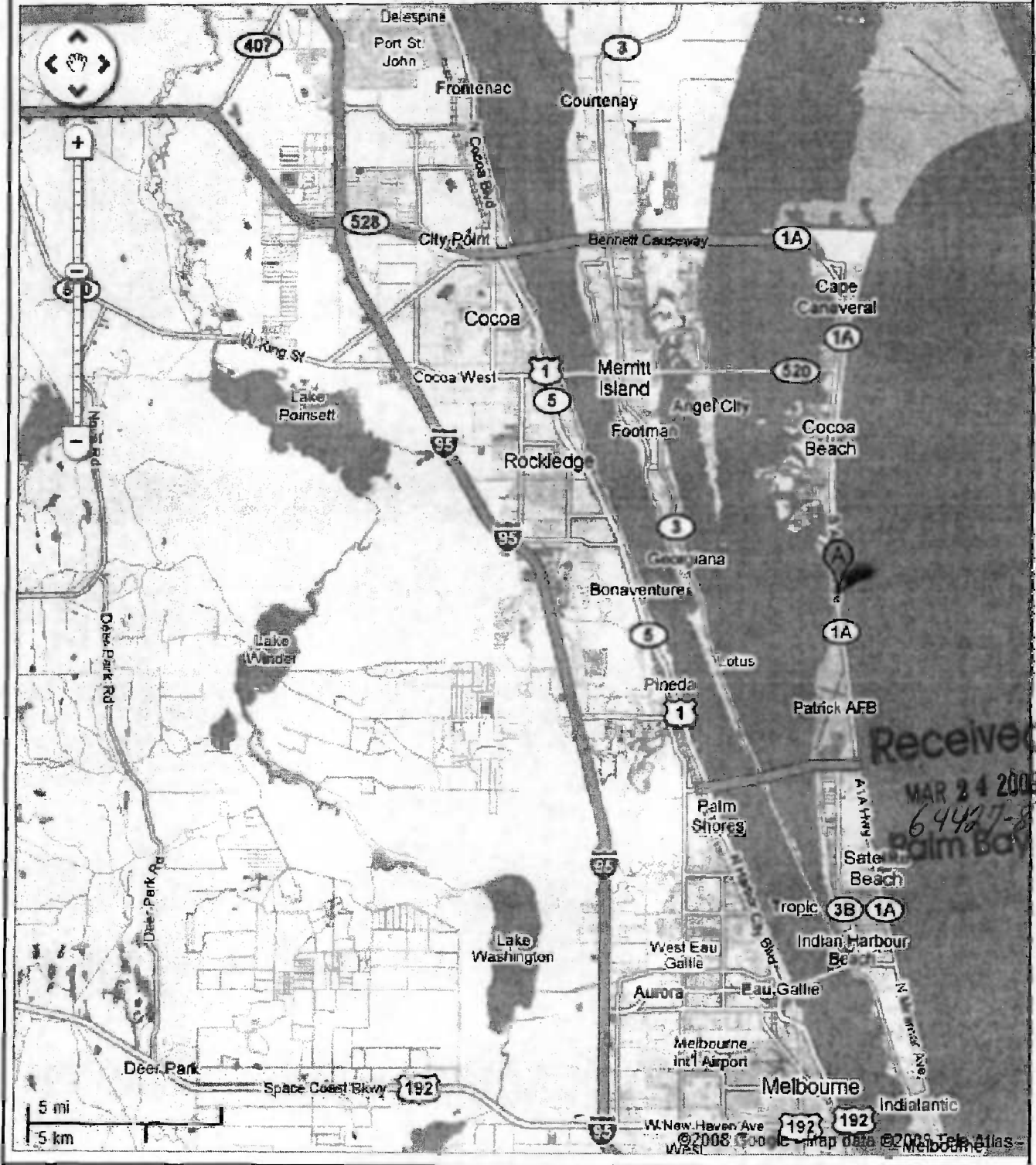


Google
Maps

Address 3360 S Atlantic Ave
Cocoa Beach, FL
32931

Notes You can enter notes



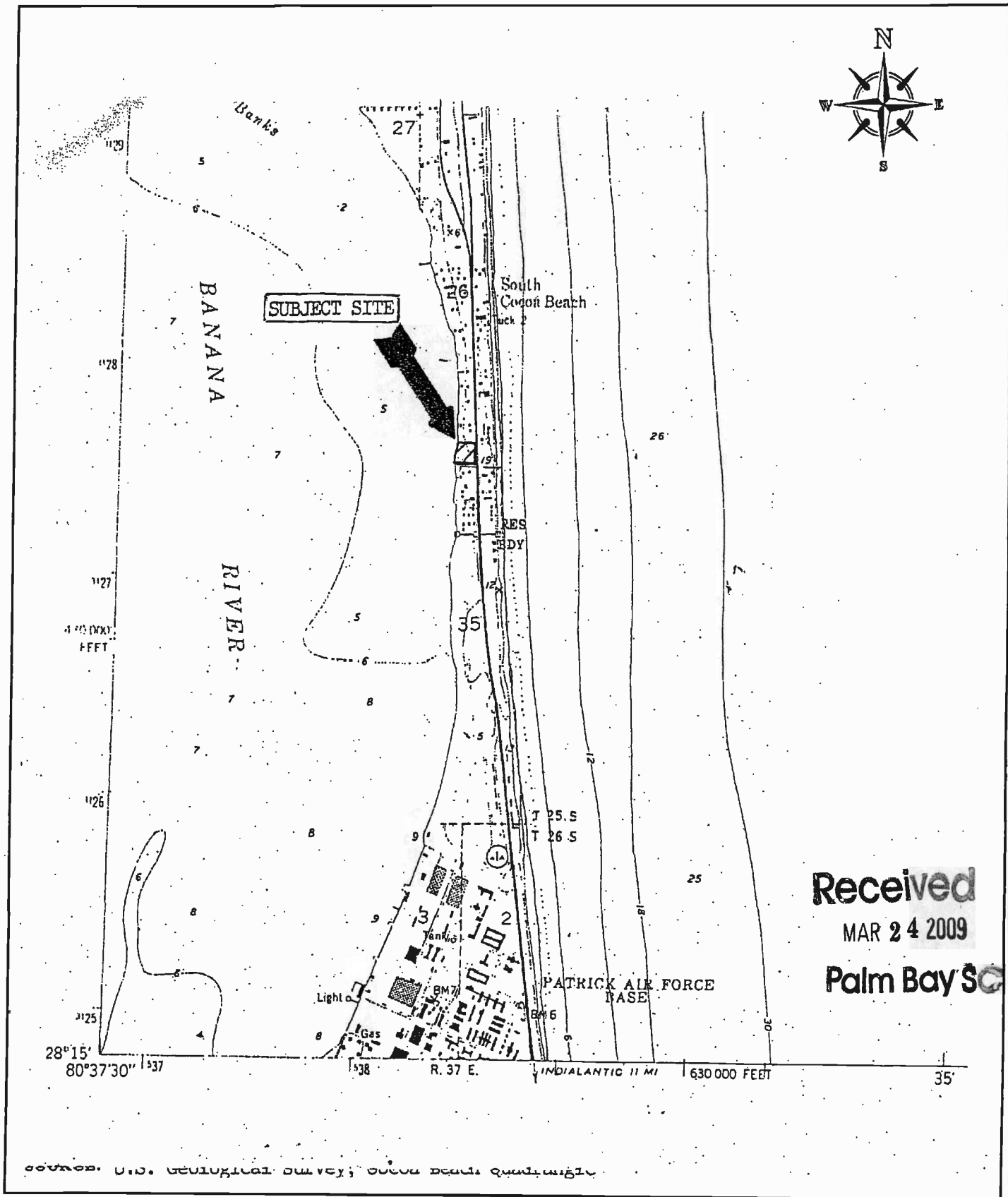
SCALE: as noted



LEE ENGINEERING, INC.
405 Pine Tree Drive
Indialantic, Florida 32903
(321) 723-7110
FBPE CERTIFICATE OF AUTHORIZATION #5969

**River Bend Condominium
Dock Modifications
VICINITY MAP**

PROJ. No.: 0334-01 DATE: 03-20-09 FIGURE No. 1 OF 11



Received
MAR 24 2009
Palm Bay SC

SCALE: 1:24,000

SECTION 26, TOWNSHIP 25 S., RANGE 37 E.



LEE ENGINEERING, INC.

405 Pine Tree Drive
Indialantic, Florida 32903
(321) 723-7110

FBPE CERTIFICATE OF AUTHORIZATION #5969

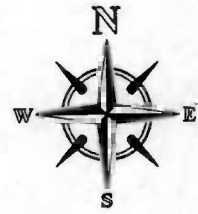
**River Bend Condominium
Dock Modifications**

USGS QUAD MAP

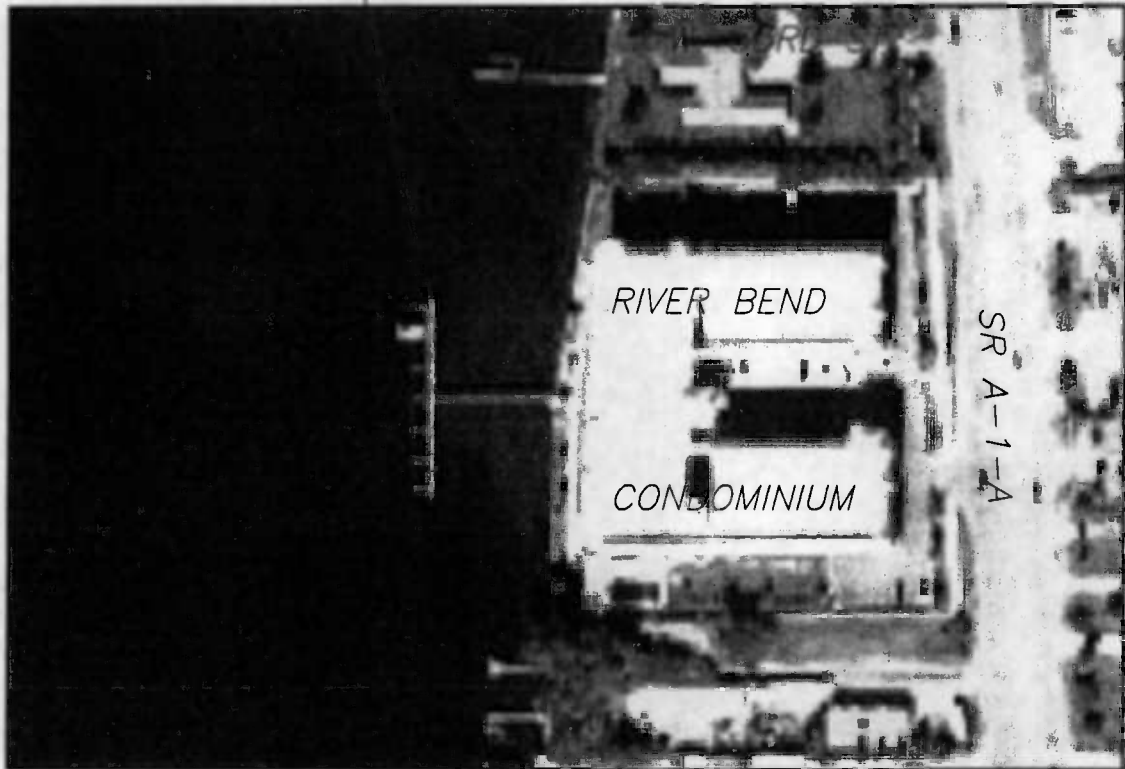
PROJ. No.: 0334-01

DATE: 03-20-09

FIGURE No. 2 OF 11



PROJECT LOCATION



Received

MAR 24 2009

Palm Bay SC

SCALE: APPROX 1"=150' SECTION 26, TOWNSHIP 25 S., RANGE 37 E.



LEE ENGINEERING, INC.

405 Pine Tree Drive
Indialantic, Florida 32903
(321) 723-7110

FBPE CERTIFICATE OF AUTHORIZATION #5969

**River Bend Condominium
Dock Modifications**

AERIAL PHOTOGRAPHY

PROJ. No.: 0334-01 | DATE: 03-20-09 | FIGURE No. 3 OF 11



Received
MAR 24 2009
644278
Palm Bay SC

SCALE: N.T.S.



LEE ENGINEERING, INC.

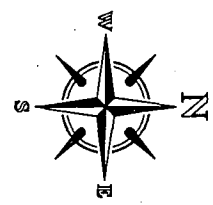
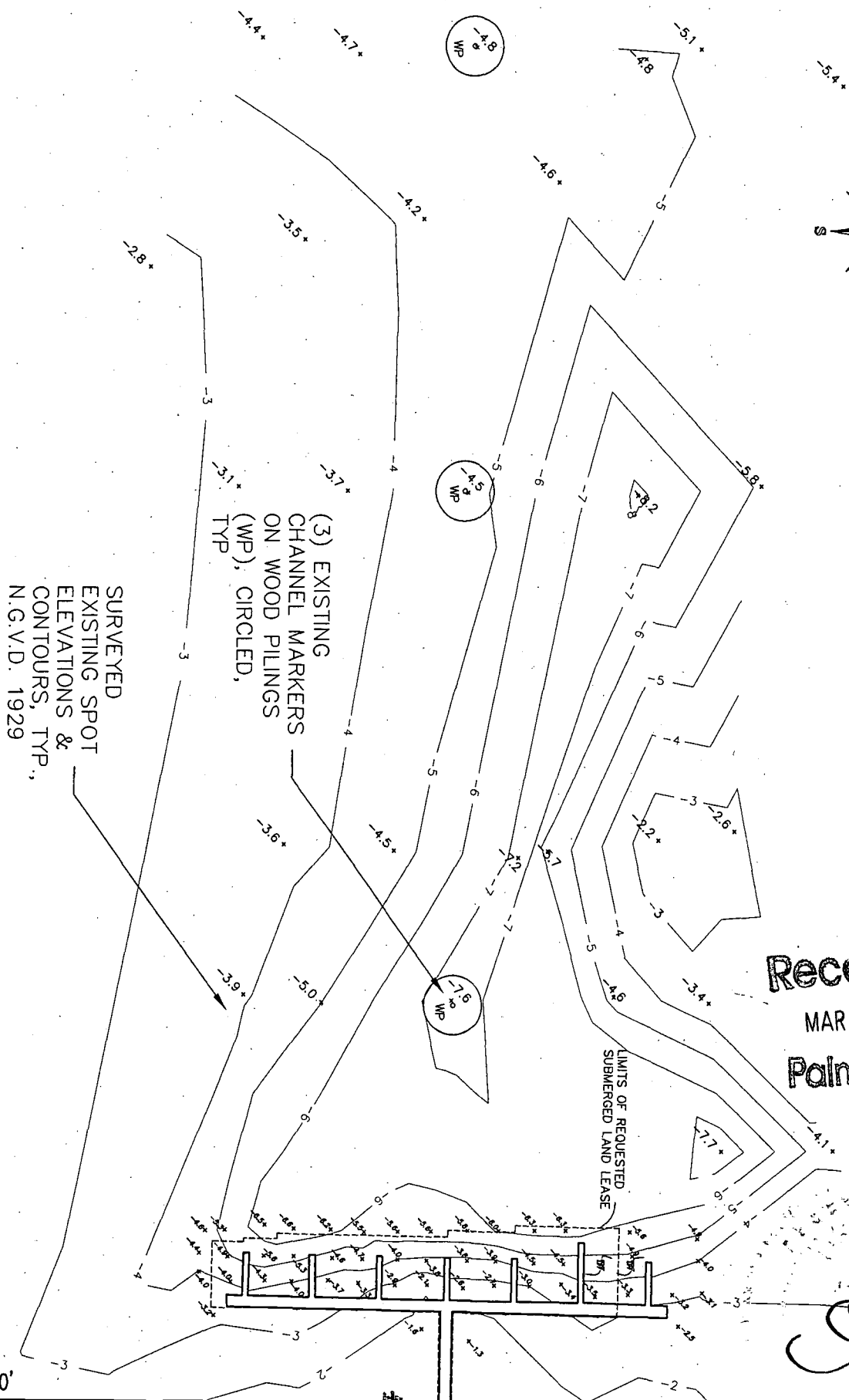
405 Pine Tree Drive
Indialantic, Florida 32903
(321) 723-7110

FBPE CERTIFICATE OF AUTHORIZATION #5969

**River Bend Condominium
Dock Modifications**

OBLIQUE AERIAL PHOTOGRAPH

PROJ. No.: 0334-01 | DATE: 03-20-09 | FIGURE No. 4 of 11



SURVEYED
EXISTING SPOT
ELEVATIONS &
CONTOURS, TYP.,
N.G.V.D. 1929

(3) EXISTING
CHANNEL MARKERS
ON WOOD PILINGS
(WP), CIRCLED,
TYP.

LIMITS OF REQUESTED
SUBMERGED LAND LEASE

Received
MAR 24 2009
Palm Bay SC

3-23-09

SCALE: 1" = 50'

LEE ENGINEERING, INC.
405 Pine Tree Drive
Indialantic, Florida 32903
(321) 723-7110
FBPE CERTIFICATE OF AUTHORIZATION #5969

**River Bend Condominium
Dock Modifications
APPROACH CHANNEL BATHYMETRY**

PROJ. No.: 0334-01 | DATE: 03-20-09 | FIGURE No. 5 of 11

S89°43'59"E (D)
 S88°59'30"E
 22.00'



DIMENSIONS OF EXISTING
 SUBMERGED LAND LEASE. (DEED
 BEARING ANGLES (D), VARY
 FROM MEASURED DUE TO
 DIFFERENCES IN ORIGINAL VS.
 NEW PROJECT SURVEYOR'S
 INTERPRETATION OF ASSUMED
 BEARINGS)

BOUNDARY OF
 PROPOSED
 SUBMERGED
 LAND LEASE

BOUNDARY OF
 EXISTING
 SUBMERGED
 LAND LEASE

SUBMERGED LAND
 LEASE #051028114
 ORB 5726, PAGE 1697
 0.09 ACRES ± OR
 4137.50 SQUARE FT±

POINT OF BEGINNING

S89°43'59"E (D)
 S88°59'30"E 96.06'

N88°59'30"W 95.11'
 N89°43'59"W (D)

EXISTING SUBMERGED LAND
 LEASE #051028114 ORB
 5726, PAGE 1697 0.09
 ACRES ± OR 4137.50
 SQUARE FT±

REQUESTED SUBMERGED
 LAND 4081.32 SQUARE FT±

LEGEND

- WP WOOD PILING
- HB HOSE BIBB
- ⊕ EO ELECTRICAL OUTLET

N00°16'01"E (D)
 N01°00'30"E 162.00'

N01°00'30"W 78.00'
 N01°16'01"W (D)

N88°59'30"W 22.00'
 N89°43'59"W (D)

N09°16'31"E (D)
 N10°01'00"E 1.81'

N01°51'30"E (D)
 N02°35'59"E 50.59'

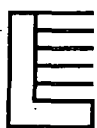
N02°05'10"E (D)
 N02°49'39"E 42.40'

S10°01'00"W (D)
 S09°16'31"W (D)

Received
 MAR 24 2009

Palm Bay SC

SCALE: 1" = 20'

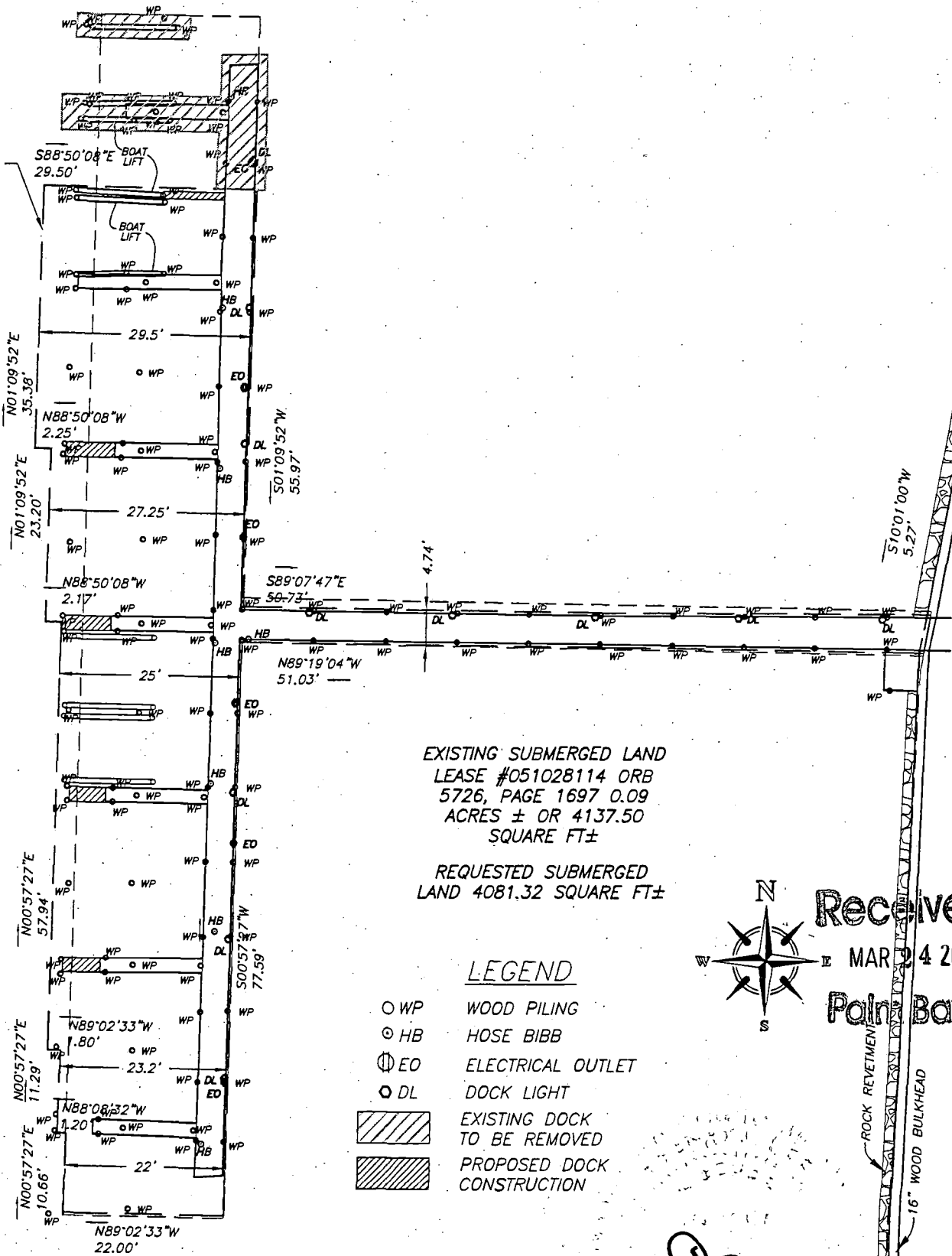


LEE ENGINEERING, INC.
 405 Pine Tree Drive
 Indialantic, Florida 32903
 (321) 723-7110
 FBPE CERTIFICATE OF AUTHORIZATION #5969

**River Bend Condominium
 Dock Modifications**
 SKETCH OF EXISTING DOCKING FACILITIES

PROJ. No.: 0334-01 | DATE: 03-20-09 | FIGURE No. 6 of 11

BOUNDARY OF PROPOSED SUBMERGED LAND LEASE



EXISTING SUBMERGED LAND
LEASE #051028114 ORB
5726, PAGE 1697 0.09
ACRES ± OR 4137.50
SQUARE FT±

REQUESTED SUBMERGED
LAND 4081.32 SQUARE FT±

LEGEND

- WP WOOD PILING
- HB HOSE BIBB
- ⊙ EO ELECTRICAL OUTLET
- DL DOCK LIGHT
- ▨ EXISTING DOCK TO BE REMOVED
- ▩ PROPOSED DOCK CONSTRUCTION



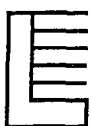
Received

MAR 24 2009

Palm Bay Se

J-23-09

SCALE: 1" = 20'



LEE ENGINEERING, INC.

405 Pine Tree Drive
Indialantic, Florida 32903
(321) 723-7110

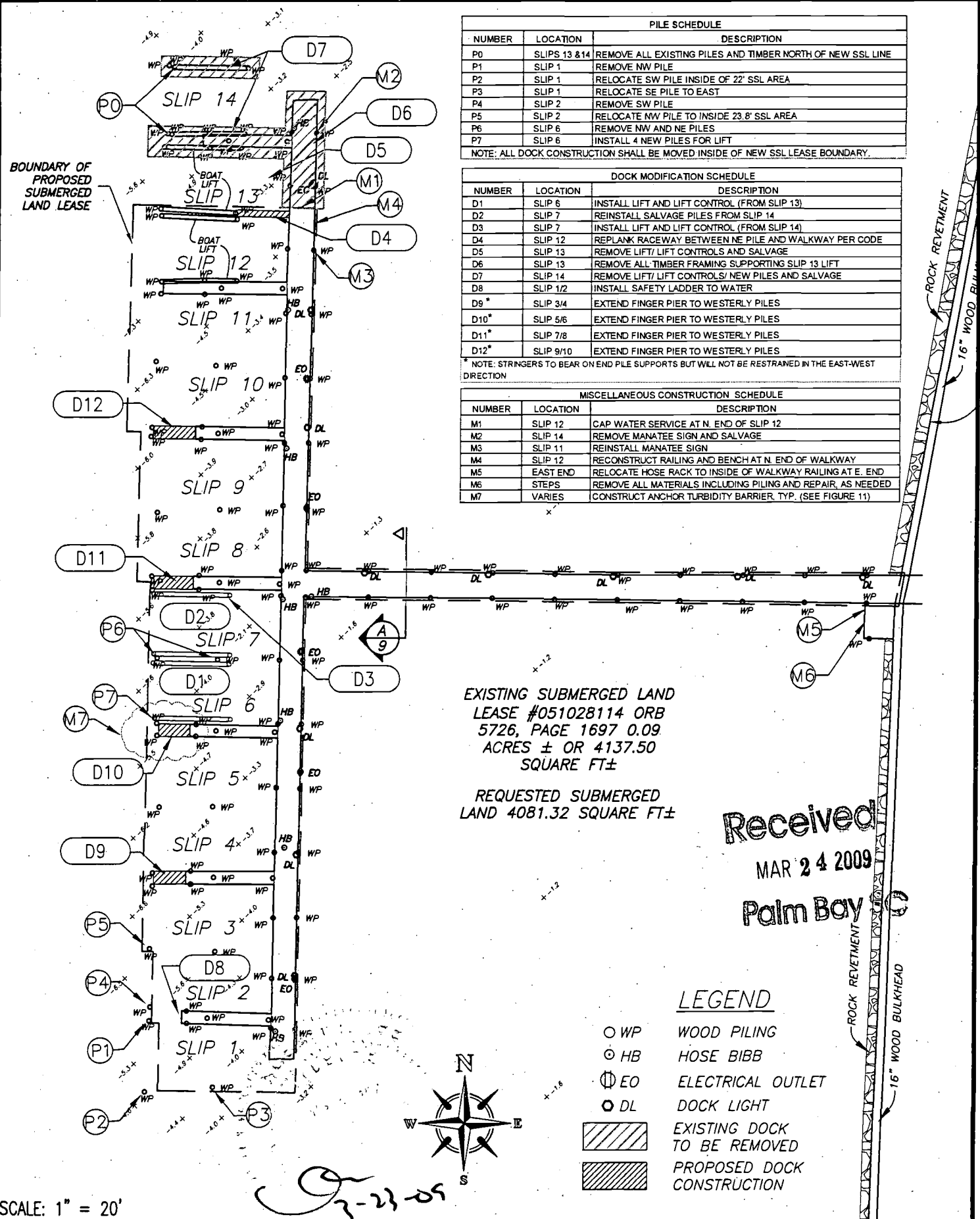
FBPE CERTIFICATE OF AUTHORIZATION #5969

**River Bend Condominium
Dock Modifications**
SKETCH OF PROPOSED SSL LEASE GEOMETRY

PROJ. No.: 0334-01

DATE: 03-20-09

FIGURE No. 7 of 11



PILE SCHEDULE		
NUMBER	LOCATION	DESCRIPTION
P0	SLIPS 13 & 14	REMOVE ALL EXISTING PILES AND TIMBER NORTH OF NEW SSL LINE
P1	SLIP 1	REMOVE NW PILE
P2	SLIP 1	RELOCATE SW PILE INSIDE OF 22' SSL AREA
P3	SLIP 1	RELOCATE SE PILE TO EAST
P4	SLIP 2	REMOVE SW PILE
P5	SLIP 2	RELOCATE NW PILE TO INSIDE 23.8' SSL AREA
P6	SLIP 6	REMOVE NW AND NE PILES
P7	SLIP 6	INSTALL 4 NEW PILES FOR LIFT

NOTE: ALL DOCK CONSTRUCTION SHALL BE MOVED INSIDE OF NEW SSL LEASE BOUNDARY.

DOCK MODIFICATION SCHEDULE		
NUMBER	LOCATION	DESCRIPTION
D1	SLIP 6	INSTALL LIFT AND LIFT CONTROL (FROM SLIP 13)
D2	SLIP 7	REINSTALL SALVAGE PILES FROM SLIP 14
D3	SLIP 7	INSTALL LIFT AND LIFT CONTROL (FROM SLIP 14)
D4	SLIP 12	REPLANK RACEWAY BETWEEN NE PILE AND WALKWAY PER CODE
D5	SLIP 13	REMOVE LIFT/ LIFT CONTROLS AND SALVAGE
D6	SLIP 13	REMOVE ALL TIMBER FRAMING SUPPORTING SLIP 13 LIFT
D7	SLIP 14	REMOVE LIFT/ LIFT CONTROLS/ NEW PILES AND SALVAGE
D8	SLIP 1/2	INSTALL SAFETY LADDER TO WATER
D9*	SLIP 3/4	EXTEND FINGER PIER TO WESTERLY PILES
D10*	SLIP 5/6	EXTEND FINGER PIER TO WESTERLY PILES
D11*	SLIP 7/8	EXTEND FINGER PIER TO WESTERLY PILES
D12*	SLIP 9/10	EXTEND FINGER PIER TO WESTERLY PILES

NOTE: STRINGERS TO BEAR ON END PILE SUPPORTS BUT WILL NOT BE RESTRAINED IN THE EAST-WEST DIRECTION

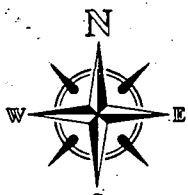
MISCELLANEOUS CONSTRUCTION SCHEDULE		
NUMBER	LOCATION	DESCRIPTION
M1	SLIP 12	CAP WATER SERVICE AT N. END OF SLIP 12
M2	SLIP 14	REMOVE MANATEE SIGN AND SALVAGE
M3	SLIP 11	REINSTALL MANATEE SIGN
M4	SLIP 12	RECONSTRUCT RAILING AND BENCH AT N. END OF WALKWAY
M5	EAST END	RELOCATE HOSE RACK TO INSIDE OF WALKWAY RAILING AT E. END
M6	STEPS	REMOVE ALL MATERIALS INCLUDING PILING AND REPAIR, AS NEEDED
M7	VARIABLES	CONSTRUCT ANCHOR TURBIDITY BARRIER TYP. (SEE FIGURE 11)

EXISTING SUBMERGED LAND LEASE #051028114 ORB 5726, PAGE 1697 0.09 ACRES ± OR 4137.50 SQUARE FT±

REQUESTED SUBMERGED LAND 4081.32 SQUARE FT±

Received
MAR 24 2009
Palm Bay

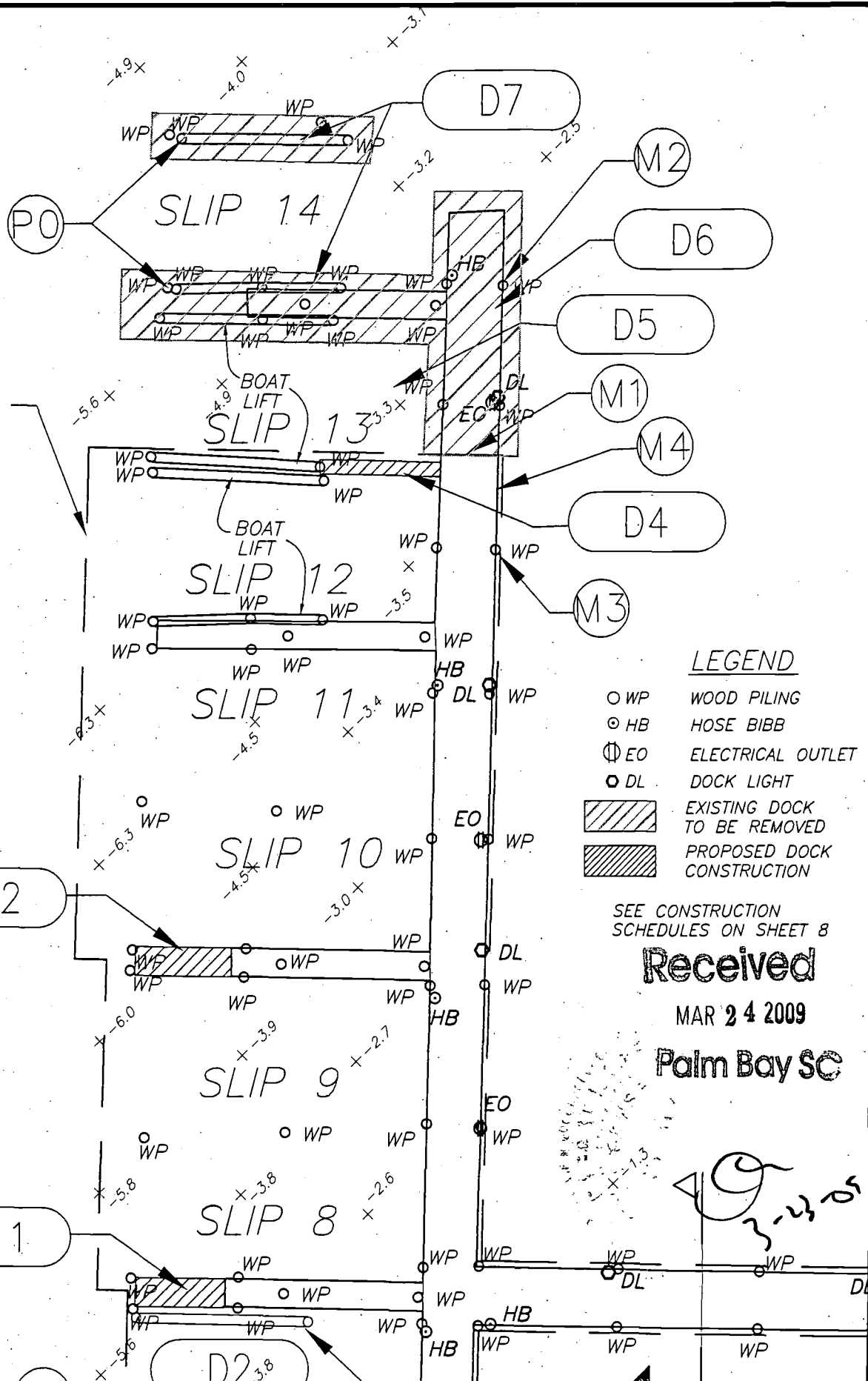
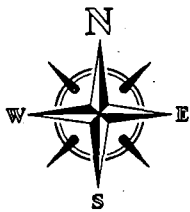
- LEGEND**
- WP WOOD PILING
 - HB HOSE BIB
 - ⊕ EO ELECTRICAL OUTLET
 - DL DOCK LIGHT
 - ▨ EXISTING DOCK TO BE REMOVED
 - ▨ PROPOSED DOCK CONSTRUCTION



SCALE: 1" = 20'

LEE ENGINEERING, INC.
 405 Pine Tree Drive
 Indialantic, Florida 32903
 (321) 723-7110
 FBPE CERTIFICATE OF AUTHORIZATION #5969.

River Bend Condominium Dock Modifications
 SKETCH OF PROPOSED MODIFICATIONS - OVERALL
 PROJ. No.: 0334-01 | DATE: 03-20-09 | FIGURE No. 8 of 11



SCALE: 1" = 10'



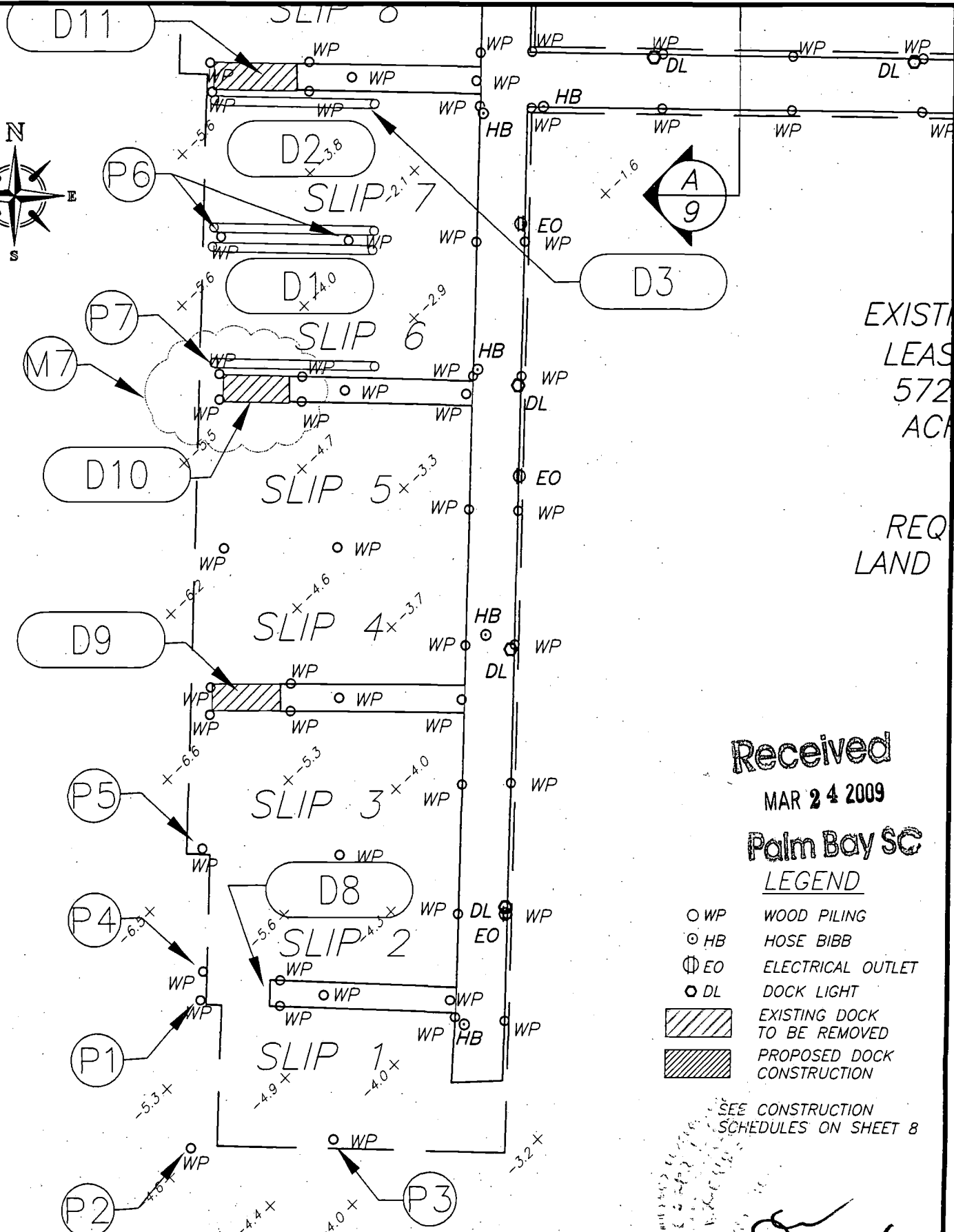
LEE ENGINEERING, INC.

405 Pine Tree Drive
Indialantic, Florida 32903
(321) 723-7110
FBPE CERTIFICATE OF AUTHORIZATION #5969

**River Bend Condominium
Dock Modifications**

SKETCH OF PROPOSED MODIFICATIONS - NORTH

PROJ. No.: 0334-01 | DATE: 03-20-09 | FIGURE No. 9 of 11



EXISTING
LEAS
572
ACR

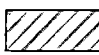
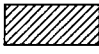
REQ
LAND

Received

MAR 24 2009

Palm Bay SC

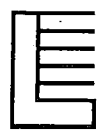
LEGEND

- WP WOOD PILING
- ⊙ HB HOSE BIBB
- ⊙ EO ELECTRICAL OUTLET
- ⊙ DL DOCK LIGHT
-  EXISTING DOCK TO BE REMOVED
-  PROPOSED DOCK CONSTRUCTION

SEE CONSTRUCTION SCHEDULES ON SHEET 8

Handwritten signature and date: 3-23-09

SCALE: 1" = 10'

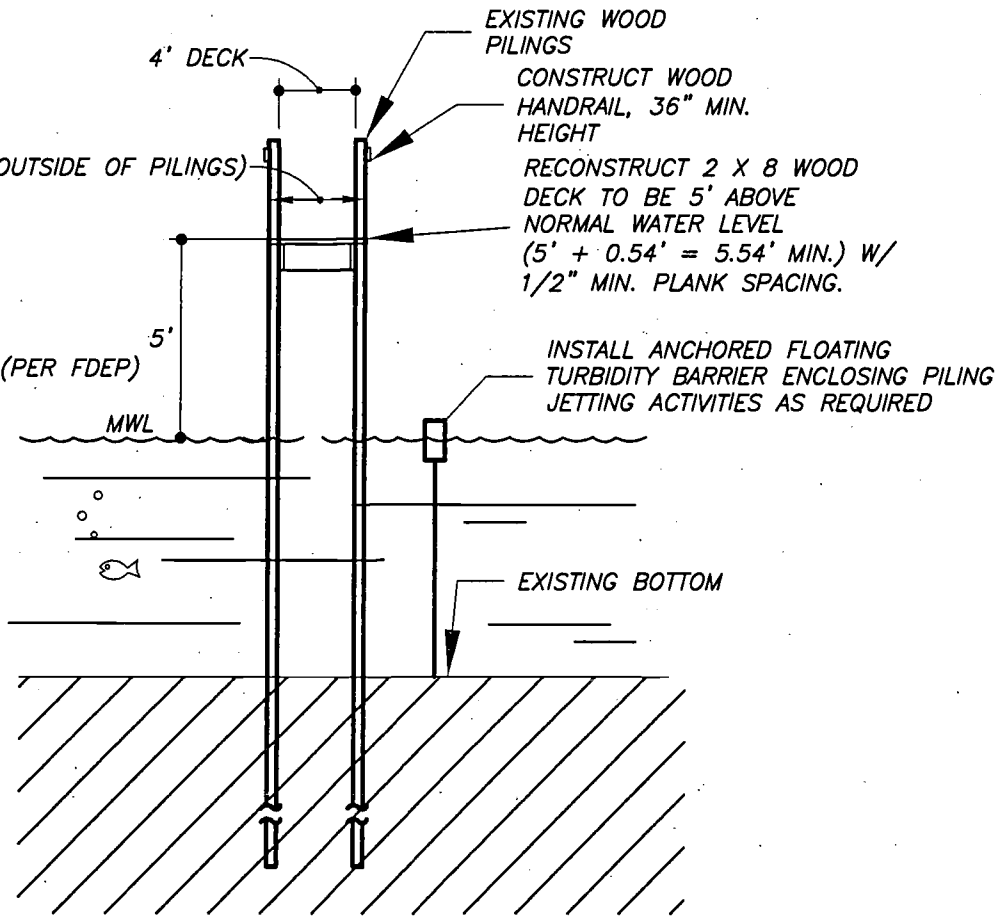


LEE ENGINEERING, INC.
405 Pine Tree Drive
Indialantic, Florida 32903
(321) 723-7110
FBPE CERTIFICATE OF AUTHORIZATION #5969

**River Bend Condominium
Dock Modifications**
SKETCH OF PROPOSED MODIFICATIONS - SOUTH

PROJ. No.: 0334-01 | DATE: 03-20-09 | FIGURE No. 10 of 11

BANANA RIVER
 M.W.L. EL. = 0.54 (PER FDEP)
 H.W. EL. = 1.5±



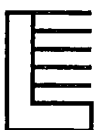
SECTION A: THROUGH DOCK

SCALE: 1" = 10' HORIZONTAL
 1" = 5' VERTICAL

Received
 MAR 24 2009
 Palm Bay SC

NOTE: DOCK SECTION IS FROM PREVIOUS PERMITTED DOCK MODIFICATION.
 PROPOSED DOCK IMPROVEMENTS WILL BE SIMILAR CONSTRUCTION.

SCALE: AS SHOWN



LEE ENGINEERING, INC.
 405 Pine Tree Drive
 Indialantic, Florida 32903
 (321) 723-7110
 FBPE CERTIFICATE OF AUTHORIZATION #5969

**River Bend Condominium
 Dock Modifications
 CROSS SECTION**

PROJ. No.: 0334-01 | DATE: 03-20-09 | FIGURE No. 11 of 11

Handwritten signature and date: 3-23-09